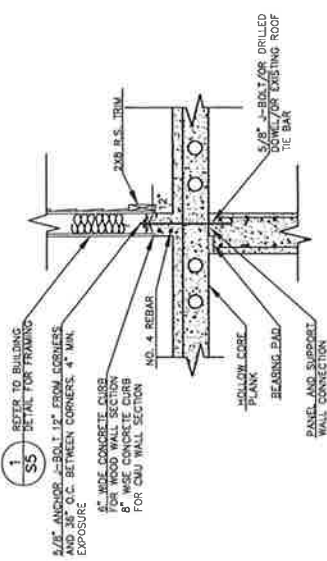
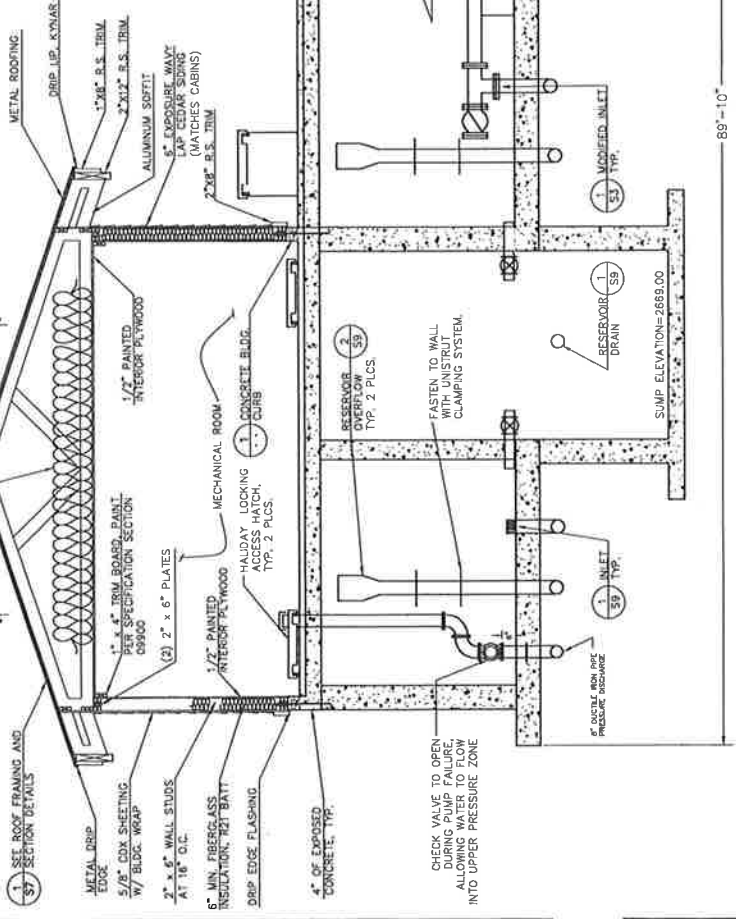


NOTES:

1. ALL CONSTRUCTION SHALL BE IN ACCORDANCE WITH LOCAL BUILDING CODES.
2. ROOF SHEATING SHALL BE 5/8" CDX.
3. ROOF SHEETING SHALL BE 8'x8' STRUCTURAL GRADE INSULATION SHALL BE IN ACCORDANCE WITH I.B.C. TABLE 2304.9.1.
4. PRE-MANUFACTURED ROOF TRUSSES SHALL BE INSTALLED IN ACCORDANCE WITH THE MANUFACTURER'S RECOMMENDATIONS.
5. DOOR HEADERS SHALL BE 2"x10" OR ENGINEER APPROVED EQUAL.
6. GARAGE DOOR HEADERS SHALL BE 16" DEEP GLB OR ENGINEER APPROVED EQUAL, CAPABLE OF SUPPORTING 1105 p/l L & 102 p/l DL.
7. TOP PLATES SHALL BE NAILED WITH FIVE 12D NAILS MINIMUM ON EACH SIDE OF EACH JOINT IN THE TOP PLATE, PER I.B.C. SECTION 2308.3.2.
8. OFFSET DOUBLE TOP PLATES BY AT LEAST 48", PER I.B.C. SECTION 2308.9.
9. DESIGN ROOF LIVE AND DEAD LOAD: TOP CHORD: 40 LBS/50 FT, 10 LBS/50 FT DEAD LOAD, BOTTOM CHORD: 0 PSF LIVE LOAD. LIVE LOAD DEFLECTION SHALL BE LIMITED TO 1/360 OF SPAN.
10. DESIGN TRUSSES UNDER DIRECT SUPERVISION OF A PROFESSIONAL ENGINEER EXPERIENCED IN DESIGN OF THIS WORK AND LICENSED IN THE STATE OF ALABAMA. ALL DESIGN SUBMITTALS SHALL BE SUBMITTED TO THE ENGINEER FOR REVIEW.
11. INSIDE WALLS AND CEILINGS WILL BE PAINTED WITH 1/2" MIN. OF INTERIOR LATEX PAINT, AND 1.5 MIL OF INDOOR LATEX PAINT, OWNER SHALL SELECT COLOR.
12. REFER TO SECTION B-B ON SHEET S5 FOR TYPICAL STRUCTURAL REINFORCING.



CONCRETE BUILDING CURB DETAIL
NOT TO SCALE



RECORD DRAWING



BRMC, LLC
615 S. UNIVERSITY BLVD
200-002-2002
205-445-4800
Cover & Blank, State 0014
Client: Taylor Engineering, Inc.

SUN UP BAY RESERVOIR
RESERVOIR BOOSTER STATION
AND WELL HOUSE
PROPOSED RES. & MECH. BUILDING

Taylor Engineering, Inc.
Civil, Design and Land Planning
Cover & Blank, State 0014
(205) 966-6600 FAX (205) 966-0861

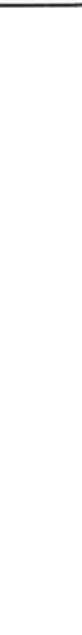
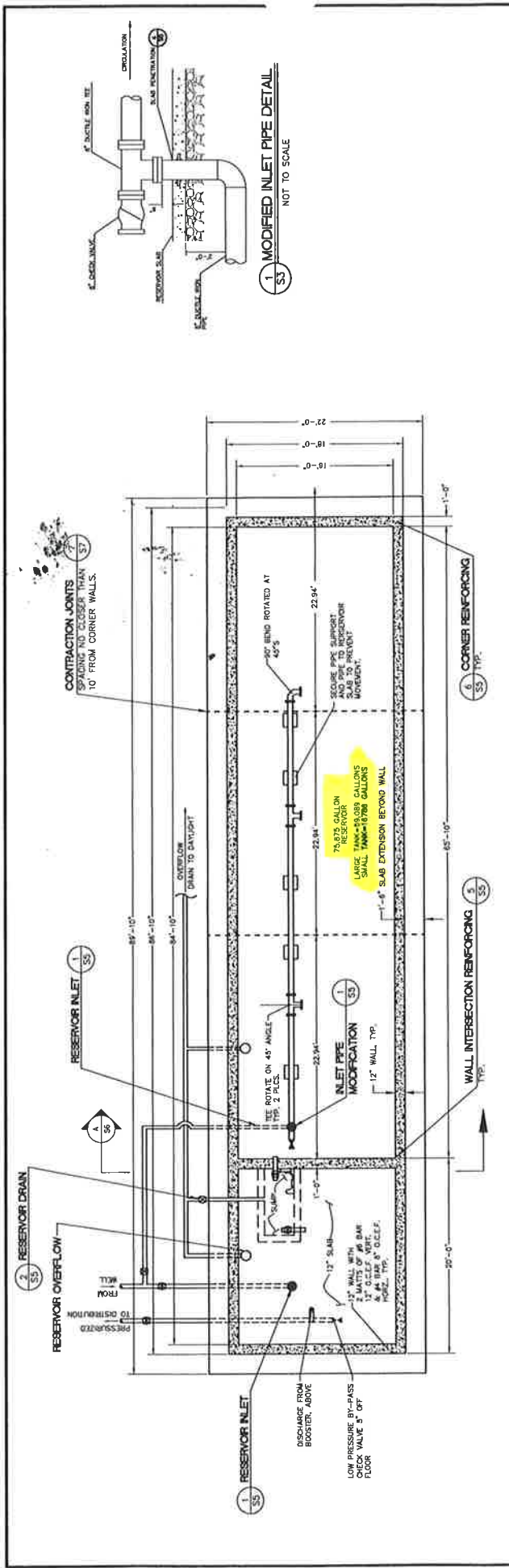
THIS DOCUMENT AND DEFS ARE AS SHOWN AND SHALL BE CONSIDERED AN INSTRUMENT OF PROFESSIONAL SERVICE OF TAYLOR ENGINEERING, INC. AND IS NOT TO BE USED IN WHOLE OR IN PART FOR ANY OTHER PROJECT WITHOUT THE WRITTEN AUTHORIZATION OF TAYLOR ENGINEERING, INC. © 2006 TAYLOR ENGINEERING, INC.

NO.	DATE	REVISION DESCRIPTION	BY

LINE IS ONE INCH
IF ON ORIGINAL DRAWING
ADJUST SCALES ACCORDINGLY

PROJECT NO.: 05109
DESIGNED BY: JMK
DRAWN BY: PAM
CHECKED BY:

DATE: 01/03/07
SHEET NO: S5



RESERVOIR FOUNDATION PLAN
SCALE 1/4\"/>

- NOTES
1. CONCRETE, $f'c = 4000$ PSI NORMAL WEIGHT CONCRETE
 2. STEEL, $F_y = 60,000$ PSI
 3. THE CONTRACTOR SHALL DISINFECT THE RESERVOIR IN ACCORDANCE WITH AWWA C652.
 4. CONSTRUCTION JOINTS SHALL BE CONTINUOUS THROUGH THE SLAB, FOOTINGS AND WALLS. JOINTS OTHER THAN THOSE SHOWN SHALL BE APPROVED BY THE ENGINEER.
 5. THE CONTRACTOR SHALL APPLY BITUMASTIC COATING TO ALL EXTERIOR WALL SURFACES PERMANENTLY IN CONTACT WITH SOIL.
 6. ALL PIPING BENEATH THE SLAB AND FOOTINGS SHALL BE FULLY ENCASED IN CONCRETE.
 7. WATER SYSTEM SUPPLY, MAXIMUM CAPACITY = 340 GPM.
NEW RESERVOIR OVERFLOW CAPACITY EXCEEDS 800 GPM.
 8. LOW PRESSURE BY-PASS CHECK VALVE ON PRESSURE LINE, SHALL OPEN AND ALLOW WATER TO FLOW INTO THE DISTRIBUTION SYSTEM'S UPPER PRESSURE ZONE IN THE EVENT OF A POWER OUTAGE.



RECORD DRAWING

NO.	DATE	REVISION DESCRIPTION	BY	DATE	DESCRIPTION

<p>USE AS ONE MAY BE NECESSARY. IF NOT ONE NOT ON THIS SHEET, ADJUST SIZES ACCORDINGLY.</p> <p>DESIGNED BY: EWS DRAWN BY: PAM CHECKED BY:</p>	<p>© 2008 TAYLOR ENGINEERING, INC.</p>
<p>Taylor Engineering, Inc. Civil, Mechanical and Land Planning 1201 University Blvd. Columbus, GA 31904 (706) 494-2408 FAX (706) 494-0881</p>	<p>BRMC, LLC 912 Northwest Blvd. 2009-10-2007 Fax 2009-10-2007 Fax Corner of Ames, Idaho 83416</p>
<p>SUN UP BAY RESERVOIR RESERVOIR BOOSTER PUMP AND WELL HOUSE RESERVOIR FOUNDATION & PIPING PLAN</p>	<p>JOB NAME: 08-C108 DATE: 01/03/07 SHEET NO: S3</p>